

marutti
VALVES

KNIFE EDGE GATE VALVE



Quality For Sure

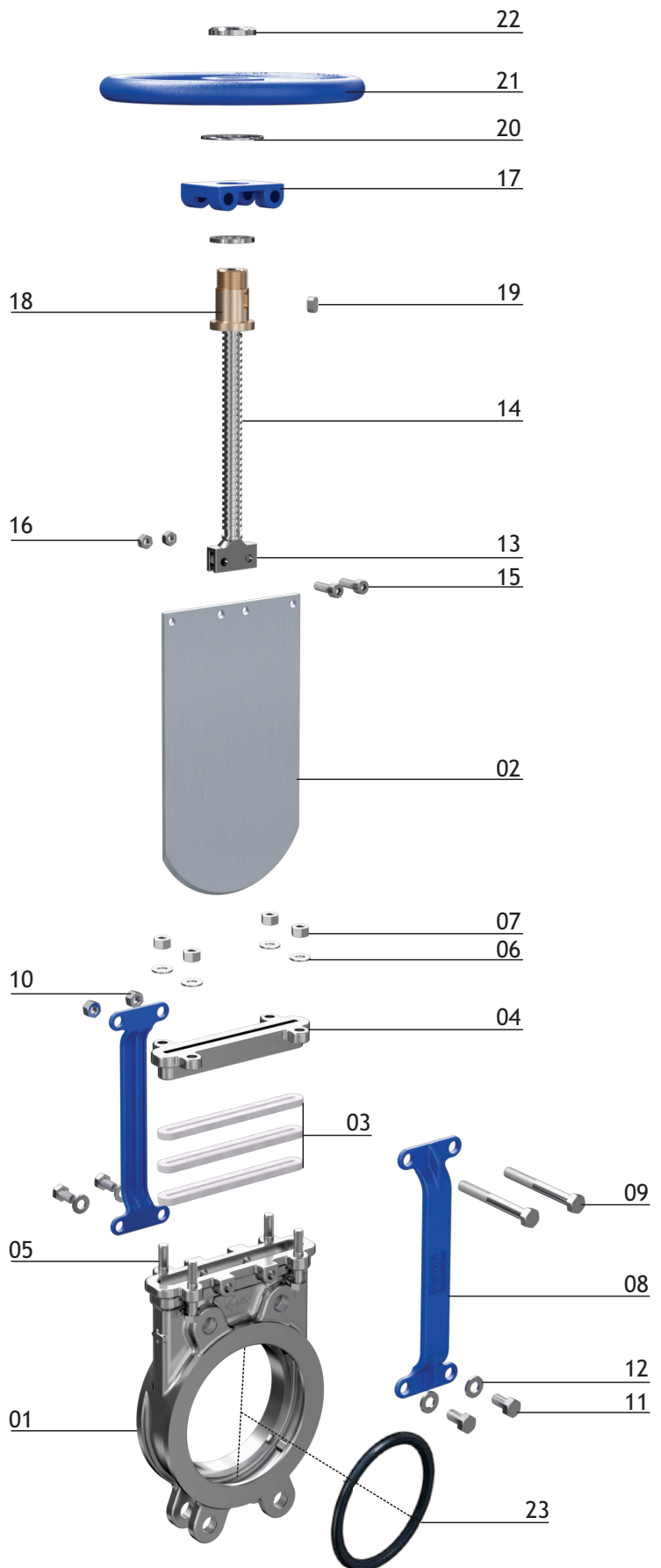


www.marutivalves.com

Materials of Construction

MATERIAL SPECIFICATIONS & PARTS CALLOUT

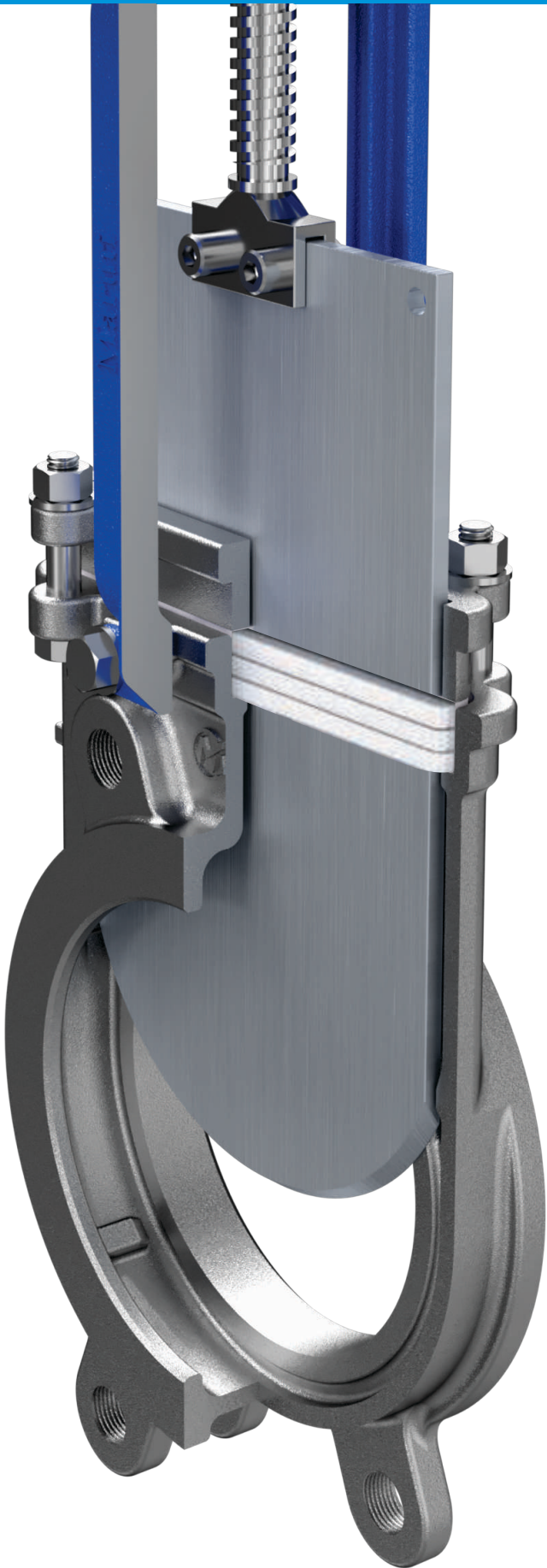
ITEM	DESCRIPTION	MATERIAL
1	Body	304 Stainless Steel
2	Gate	304 Stainless Steel
3	Gland Packing Set	PTFE / EPDM / Arebestroe
4	Gland Follower	Stainless Steel / Mild Steel
5	Gland Bolt	Stainless Steel / High Tensile
6	Spring Washer	Stainless Steel / High Tensile
7	Gland Nut	Stainless Steel / High Tensile
8	Yoke	SS 410 Steel / Carbon Steel
9	Mounting Bolt (Top)	Stainless Steel / High Tensile
10	Mounting Nut (Top)	Stainless Steel / High Tensile
11	Mounting Bolt (Bottom)	Stainless Steel / High Tensile
12	Spring Washer	Stainless Steel / High Tensile
13	Gate Fork	304 Stainless Steel
14	Stem	304 Stainless Steel
15	Fork Bolt	Stainless Steel / High Tensile
16	Fork Nut	Stainless Steel / High Tensile
17	Block	Mild Steel
18	Yoke Bush	Forged Brass
19	Key	Mild Steel
20	Thrust Washer	Brass / Stainless Steel
21	Hand Wheel	Ductile Iron
22	Check Nut	Zinc Plated Carbon Steel
23	Seat 1	EPDM / Viton / PTFE










GLAND PACKING OPTIONS



maruli
VALVES



MAXIMUM TEMPERATURE RANGE

Pure PTFE	500°F	
	260°C	
PTFE impregnated Synthetic Fiber	450°F	
	232°C	
PTFE w/Buna-N Quad Seal¹	194°F	
	90°C	
PTFE w/Viton® Quad Seal¹	392°F	
	200°C	
PTFE w/EPDM Quad Seal	248°F	
	120°C	
PTFE w/Copper Wiper²	500°F	
	260°C	
Graphite	1202°F	
	650°C	

Knife Edge Gate Valve

MODEL - MI-MS

The **MI-MS** knife gate is an UNI & BI-DIRECTIONAL Wafer full lug type valve designed according to MSS-SP-81 for industrial service applications. The design of the body and seat assures non-clogging shut off on suspended solids in industries such as:

- Pulp and Paper
- Power plants
- Mining
- Chemical plants
- Pharma
- Waste Water Treatment Plants
- Food and Beverage
- Steel Plant
- Oil & Gas
- Sugar Industries

Sizes : DN 50/2" to DN 1200/48" (larger diameters on request)

Working Pressure:

DN 2" / 50mm to DN 10" / 250 mm	150 psi / 10 bar
DN 12" / 300mm to DN 16" / 400 mm	90 psi / 6 bar
DN 18" / 450mm	75 psi / 5 bar
DN 20" / 500mm to DN 24" / 600 mm	60 psi / 4 bar
DN 28" / 700mm to DN 48" / 1200 mm	30 psi / 2 bar

Standard flange connection :

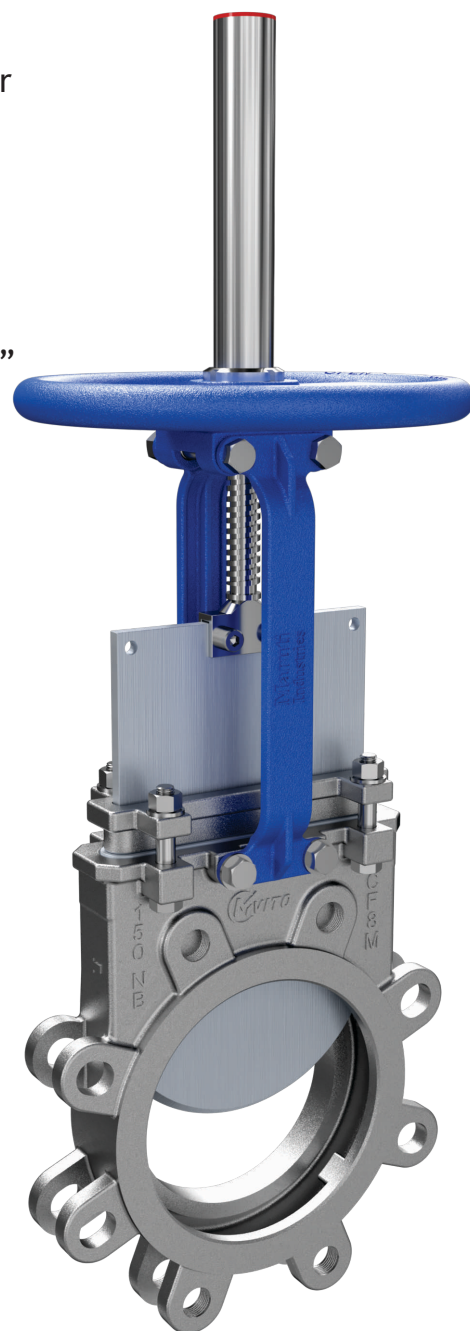
DIN PN 10 and ANSI B16.5 (class 150) and Table "E" & "D"

Other Flanges Connections Available on Request

DIN PN6 / DIN PN16 / DIN PN25 / ANSI125

PART	MATERIAL OF CONSTRUCTION :
01 - BODY	CF8, CF8M, WCB, OTHER ON REQUEST
02 - GATE	AISI 304 AISI 316 , OTHER ON REQUEST
03 - SEAT	METAL TO METAL / SOFT SEAT
04 - PACKING	PTFE IMPREG. SYNTH. FIBRE
05 - GLAND FOLLOWER	CF8,CF8M,WCB
06 - STEM	AISI 304, AISI 316, OTHER ON REQUEST
07 - STEM NUT	FORGE / BRASS / EN-9 / D.I
08 - YOKE	MILD STEEL, S.S. 410
09 - SEAT RING	AISI 304,AISI 316
10 - OPERATION	MANNUL
11 - FASTENERS	HIGH-TENSILE (ZINC COATED)
12 - HAND WHEEL	S.G. IRON
13 - STEM PROTECTOR	MILD STEEL (ZINC PLATED)

*Reserves the right to change specifications without notice.



Knife Edge Gate Valve

MODEL - MI-MS2



marul
VALVES

The **MI-MS2** Stainless Steel Slurry & Plup Knife Gate Valve is An UNI & BI-DIRECTIONAL for Industrial Service Applications This Body And Seat Assures Non-clogging Shut Off On Suspended Solids In Industries Such As :

- Pulp And Paper
- Wastewater Treatment Plants
- Chemical Plants
- Food And Beverage
- Bulk Handling
- Mining

Sizes : DN 50/2" to DN 500/20"

Working Pressure:

DN 2" / 50mm to DN 10" / 250 mm	150 psi / 10 bar
DN 12" / 300mm to DN 16" / 400 mm	90 psi / 6 bar
DN 18" / 450mm	75 psi / 5 bar
DN 20" / 500mm to DN 24" / 600 mm	60 psi / 4 bar

Standard flange connection :

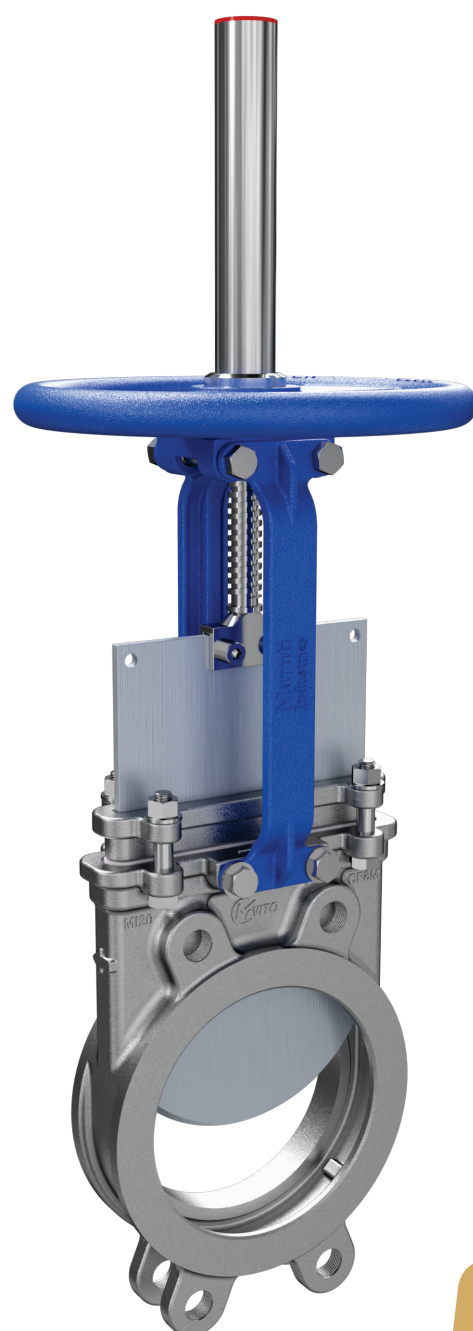
DIN PN 10 and ANSI B16.5 (class 150) and Table "E" & "D"

Other Flanges Connections Available on Reguest

DIN PN6 / DIN PN16 / DIN PN25 / ANSI125

PART	MATERIAL OF CONSTRUCTION :
01 - BODY	Cf8, CF8M, CF3M, WCB, OTHER ON REQUEST
02 - GATE	AISI 304 / AISI 316, OTHER ON REQUEST
03 - SEAT	METAL TO METAL / SOFT SEAT
04 - PACKING	PTFE Impreg. Synth. Fibre
05 - GLAND FOLLOWER	Cf8, CF8M, WCB
06 - STEM	AISI 304 / AISI 316
07 - STEM NUT	Forge Brass,
08 - YOKE	Mild Steel, S.S. 410
09 - SEAT RING	Integral / Other On Request
10 - OPERATION	S.G IRON
11 - FASTENERS	HIGH-TENSILE (Zinc Coated)

*Reserves the right to change specifications without notic.



Knife Edge Gate Valve

MODEL - MI-MD

The **MI-DM Knife Edge Gate Valves** is An UNI & BI-DIR. Wafer semi Lug Type Valve Designed According To MSS-SP-81 For Industrial Service Applications. The Design Of The Body And Seat Assures Non-clogging Shut Off On Suspended Solids In Industries Such As:

- Pulp And Paper
- Food And Beverage
- Wastewater Treatment Plants
- Bulk Handling
- Chemical Plants
- Mining

Sizes : DN 50/2" to DN 1100/44"

Working pressure :

DN 2" / 50mm to DN 10" / 250 mm	150 psi / 10 bar
DN 12" / 300mm to DN 16" / 400 mm	90 psi / 6 bar
DN 18" / 450mm	75 psi / 5 bar
DN 20" / 500mm to DN 24" / 600 mm	60 psi / 4 bar
DN 28" / 700mm to DN 48" / 1200 mm	30 psi / 2 bar

Standard flange connection :

DIN PN 10 and ANSI B16.5 (class 150) and Table "E" & "D"

Other Flanges Connections Available on Request

DIN PN6 / DIN PN16 / DIN PN25 / ANSI125

PART	MATERIAL OF CONSTRUCTION :
01 - BODY	DUCTILE IRON / CAST IRON / GGG40 / GL500
02 - GATE	AISI 304 AISI 316 , OTHER ON REQUEST
03 - SEAT	METAL TO METAL / SOFT SEAT
04 - PACKING	PTFE IMPREG. SYNTH. FIBRE
05 - GLAND FOLLOWER	CF8,CF8M,WCB
06 - STEM	AISI 304, AISI 316, OTHER ON REQUEST
07 - STEM NUT	FORGE / BRASS / EN-9 / D.I
08 - YOKE	MILD STEEL, S.S. 410
09 - SEAT RING	AISI 304,AISI 316
10 - OPERATION	MANNUL
11 - FASTENERS	HIGH-TENSILE (ZINC COATED)
12 - HAND WHEEL	S.G. IRON
13 - STEM PROTECTOR	MILD STEEL (ZINC PLATED)

*Reserves the right to change specifications without notice.



Heavy Duty Knife Edge Gate Valve

MODEL - MI-MG



maruli
VALVES

The **MI-MG Model** knife gate is an UNI & BI-DIRECTIONAL lug type valve designed according to MSS-SP-81 for industrial service applications. The design of the body and seat assures non-clogging shut off on suspended solids in industries such as:

- Pulp and Paper
- Waste Water Treatment Plants
- Power plants
- Food and Beverage
- Mining
- Chemical plants

Sizes : DN 50/2" to DN 1100/44"

Working pressure :

DN 2" / 50mm to DN 10" / 250 mm	150 psi / 10 bar
DN 12" / 300mm to DN 16" / 400 mm	90 psi / 6 bar
DN 18" / 450mm	75 psi / 5 bar
DN 20" / 500mm to DN 24" / 600 mm	60 psi / 4 bar
DN 28" / 700mm to DN 48" / 1200 mm	30 psi / 2 bar

Standard flange connection :

DIN PN 10 and ANSI B16.5 (class 150) and Table "E" & "D"

Other Flanges Connections Available on Request

DIN PN6 / DIN PN16 / DIN PN25 / ANSI125

PART	MATERIAL OF CONSTRUCTION :
01 - BODY	DUCTILE IRON / CAST IRON / GGG40 / GL500
02 - GATE	AISI 304 AISI 316 , OTHER ON REQUEST
03 - SEAT	METAL TO METAL / SOFT SEAT
04 - PACKING	PTFE IMPREG. SYNTH. FIBRE
05 - GLAND FOLLOWER	CF8,CF8M,WCB
06 - STEM	AISI 304, AISI 316, OTHER ON REQUEST
07 - STEM NUT	MILD STEEL
08 - YOKE	MILD STEEL
09 - SEAT RING	AISI 304,AISI 316
10 - OPERATION	BEVAL GEAR (MULTI TURN)
11 - FASTENERS	HIGH-TENSILE (ZINC COATED)
12 - HAND WHEEL	MILD STEEL
13 - STEM PROTECTOR	MILD STEEL (ZINC PLATED)



*Reserves the right to change specifications without notice.

Knife Edge Gate Valve

MODEL - MI-MP2

The **MI-MP2 Model Pneumatic Knife Gate Valves** is An UNI & BI-Directional Lug Type Valve Designed According To MSS-SP81 For Industrial Service Applications. The Design of The Body And Seat Assures Non-Clogging Shut Of On Suspended Solids in Industries Such As:

- Pulp And Paper
- Wastewater Treatment Plants
- Chemical Plants
- Food And Beverage
- Bulk Handling
- Mining

Sizes : DN 50/2" to DN 1000/40"

Working pressure :

DN 2"/ 50mm to DN 10" / 250 mm	150 psi / 10 bar
DN 12"/ 300mm to DN 16" / 400 mm	90 psi / 6 bar
DN 18"/ 450mm	75 psi / 5 bar
DN 20"/ 500mm to DN 24" / 600 mm	60 psi / 4 bar
DN 28"/ 700mm to DN 40" / 1000 mm	30 psi / 2 bar

Standard flange connection :

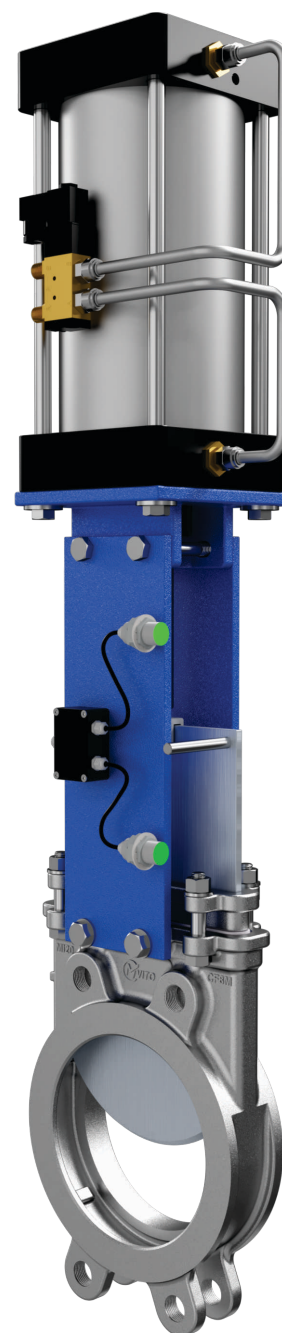
DIN PN 10 and ANSI B16.5 (class 150) and Table "E" & "D"

Other Flanges Connections Available on Request

DIN PN6 / DIN PN16 / DIN PN25 / ANSI125

PART	MATERIAL OF CONSTRUCTION :
01 - BODY	WCB, CF8, CF8M / OTHER ON REQUEST
02 - GATE	AISI 304 / AISI 316 / OTHER ON REQUEST
03 - SEAT	METAL TO METAL / SOFT SEAT
04 - PACKING	PTFE IMPREG. SYNTH. FIBRE
05 - GLAND FOLLOWER	CF8,CF8M,WCB
06 - SOLENOID VALVE	5/2 & 5/3 WAY - SINGLE OR DOUBLE COIL
07 - LIMIT SWITCH	MECHANICAL, PROXIMITY
08 - YOKE	MILD STEEL
09 - SEAT RING	AISI 304 / AISI 316 / Integral
10 - OPERATION	PNEUMATIC OPERATED
11 - FASTENERS	HIGH-TENSILE (ZINC COATED)
12 - CYLINDER TYPE	DOUBLE ACTING
13 - CYLINDER BERRAL	ALUMINUM

*Reserves the right to change specifications without notice.



Knife Edge Gate Valve

MODEL - MI-MDP



maruli
VALVES

The **MI-MDP Model Pneumatic Knife Gate Valves** is An UNI & BI-Directional Lug Type Valve Designed According To MSS-SP-81 For Industrial Service Applications. The Design of The Body And Seat Assures Non-Clogging Shut Of On Suspended Solids in Industries Such As:

- Pulp And Paper
- Wastewater Treatment Plants
- Chemical Plants
- Food And Beverage
- Bulk Handling
- Mining
- etc.

Sizes : DN 50/2" to DN 1000/40"

Working pressure :

DN 2" / 50mm to DN 10" / 250 mm	150 psi / 10 bar
DN 12" / 300mm to DN 16" / 400 mm	90 psi / 6 bar
DN 18" / 450mm	75 psi / 5 bar
DN 20" / 500mm to DN 24" / 600 mm	60 psi / 4 bar
DN 28" / 700mm to DN 40" / 1000 mm	30 psi / 2 bar

Standard flange connection :

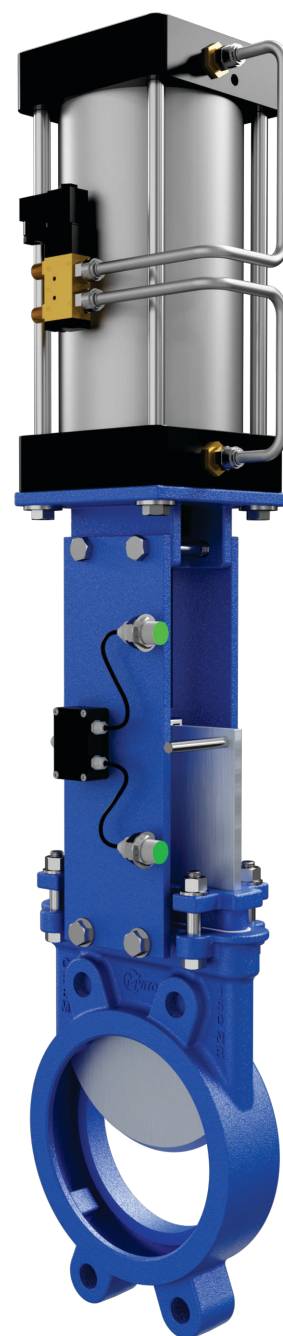
DIN PN 10 and ANSI B16.5 (class 150) and Table "E" & "D"

Other Flanges Connections Available on Request

DIN PN6 / DIN PN16 / DIN PN25 / ANSI125

PART	MATERIAL OF CONSTRUCTION :
01 - BODY	DUCTILE IRON, CAST IRON, GGG40
02 - GATE	AISI 304 / AISI 316 / OTHER ON REQUEST
03 - SEAT	METAL TO METAL / SOFT SEAT
04 - PACKING	PTFE IMPREG. SYNTH. FIBRE
05 - GLAND FOLLOWER	CF8,CF8M,WCB
06 - SOLENOID VALVE	5/2 & 5/3 WAY - SINGLE OR DOUBLE COIL
07 - LIMIT SWITCH	MECHANICAL, PROXIMITY
08 - YOKE	MILD STEEL
09 - SEAT RING	AISI 304 / AISI 316 / Integral
10 - OPERATION	PNEUMATIC OPERATED
11 - FASTENERS	HIGH-TENSILE (ZINC COATED)
12 - CYLINDER TYPE	DOUBLE ACTING
13 - CYLINDER BERRAL	ALUMINUM

*Reserves the right to change specifications without notice.



Knife Edge Gate Valve

MODEL - MI-ME

The **MI-ME Model / Electric Actuator** Knife gate is an UNI & BI-Direction Lug Type Valve Designed According to MSS-SP-81 For Industrial service application. The design of the body and seat assured non-clogging Shut of on suspended solids in industries such as :

- Pulp and Paper
- Waste Water Treatment Plants
- Power plants
- Food and Beverage
- Mining
- Steel Plant
- Chemical plants

Sizes : DN 50/2" to DN1600/64"
(larger diameters on request)

Working pressure :

DN 2" / 50mm to DN 10" / 250 mm	150 psi / 10 bar
DN 12" / 300mm to DN 16" / 400 mm	90 psi / 6 bar
DN 18" / 450mm	75 psi / 5 bar
DN 20" / 500mm to DN 24" / 600 mm	60 psi / 4 bar
DN 28" / 700mm to DN 64" / 1600 mm	30 psi / 2 bar

Standard flange connection :

DIN PN 10 and ANSI B16.5 (class 150) and Table "E" & "D"

Other Flanges Connections Available on Request

DIN PN6 / DIN PN16 / DIN PN25 / ANSI125

PART	MATERIAL OF CONSTRUCTION :
01 - BODY	CF8, CF8M, WCB, DUCTILE IRON
02 - GATE	AISI 304 / AISI 316
03 - SEAT	METAL TO METAL / SOFT SEAT
04 - PACKING	PTFE IMPREG. SYNTH. FIBRE
05 - GLAND FOLLOWER	CF8,CF8M,WCB
06 - STEM	AISI 304 / AISI 316
07 - STEM NUT	MILD STEEL
08 - YOKE	MILD STEEL
09 - SEAT RING	AISI 304 / AISI 316, Integral as Body Cast
10 - OPERATION	ELECTRIC ACUATOR
11 - FASTENERS	HIGH-TENSILE (ZINC COATED)

*Reserves the right to change specifications without notice.



Through Conduit Knife Gate Valve

MODEL - MI-MLG



maruli
VALVES

The **MI-MLG** Model Knife Edge Gate is Bi-Direction Wafer Lug Type Valve Designed According To MSS-SP-81 For Industrial Service Applications. The Design Of The Body And Seat Assures Non-clogging Shut Off On Suspended Solids In Industries Such As:

- Pulp And Paper
- Wastewater Treatment Plants
- Chemical Plants
- Power Plants
- Bulk Handling
- Etc.

Sizes : DN 50/2" to DN₅₀₀/20"
(larger diameters on request)

Working pressure :

DN 2" / 50mm to DN 10" / 250 mm	150 psi / 10 bar
DN 12" / 300mm to DN 16" / 400 mm	90 psi / 6 bar
DN 18" / 450mm	75 psi / 5 bar
DN 20" / 500mm	60 psi / 4 bar

Standard flange connection :

DIN PN 10 and ANSI B16.5 (class 150) and Table "E" & "D"

Other Flanges Connections Available on Request

DIN PN6 / DIN PN16 / DIN PN25 / ANSI125

PART	MATERIAL OF CONSTRUCTION :
01 - BODY	DUCTILE IRON, CAST IRON, GGG40
02 - GATE	AISI 304 / AISI 316 / OTHER ON REQUEST
03 - SEAT	METAL TO METAL / SOFT SEAT
04 - PACKING	PTFE IMPREG. SYNTH. FIBRE
05 - GLAND FOLLOWER	CF8,CF8M,WCB
06 - SOLENOID VALVE	5/2 & 5/3 WAY - SINGLE OR DOUBLE COIL
07 - LIMIT SWITCH	MECHANICAL, PROXIMITY
08 - YOKE	MILD STEEL
09 - SEAT RING	AISI 304 / AISI 316 / Integral
10 - OPERATION	PNEUMATIC OPERATED
11 - FASTENERS	HIGH-TENSILE (ZINC COATED)
12 - CYLINDER TYPE	DOUBLE ACTING
13 - CYLINDER BERRAL	ALUMINUM

*Reserves the right to change specifications without notice.



Bi-Direction Knife Edge Gate Valve

The Knife gate is an BI-DIRECTIONAL semi lug type & flange type valve designed according to MSS-SP-81 for industrial service applications. The design of the body and seat assures non-clogging shut off on suspended solids in industries such as:

- Pulp and Paper
- Power plants
- Mining
- Chemical plants
- Slurry Application
- Waste Water Treatment Plants
- Food and Beverage
- Steel Plant
- Pharma
- etc.

Sizes : DN 50/2" to DN 400/16" (larger diameters on request)

Working Pressure:

DN 2" / 50mm to DN 10" / 250 mm	150 psi / 10 bar
DN 12" / 300mm to DN 16" / 400 mm	90 psi / 6 bar
DN 18" / 450mm	75 psi / 5 bar

Standard flange connection :

DIN PN 10 and ANSI B16.5 (class 150) and Table E

Other Flanges Connections Available on Request

DIN PN6 / DIN PN16 / DIN PN25 / ANSI125

MODEL - MI-BDP



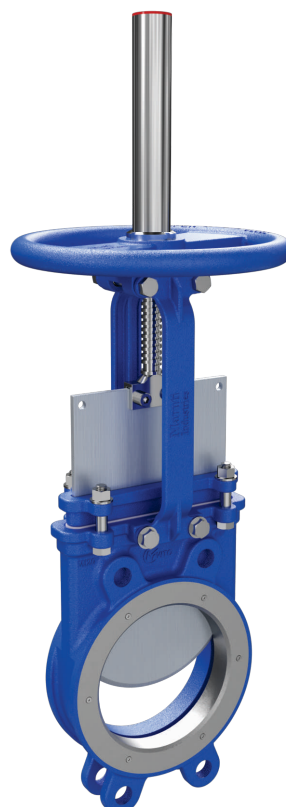
PU LINED

MODEL - MI-BDR



RUBBER SLEEVE

MODEL - MI-BDM

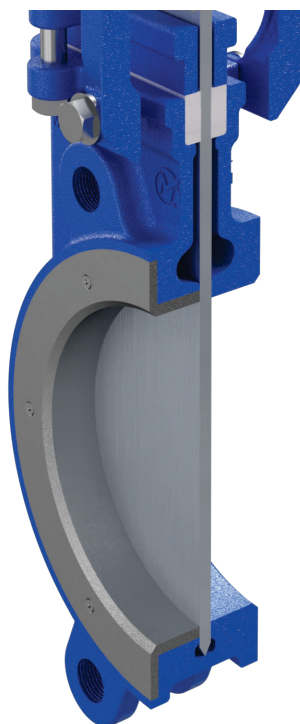


METAL TO METAL

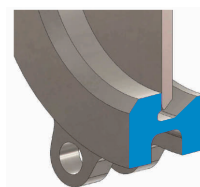


Uni-Direction
Soft Seat

Bi-Direction
Metal Seat



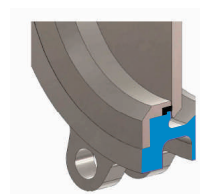
SEAT TYPES



METAL / METAL

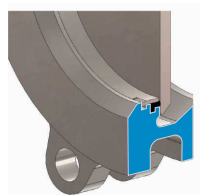
For applications with:

- High temperature
- High density media application
- When full tightness is not required



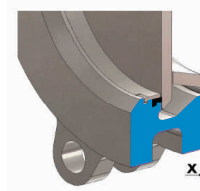
RESILIENT, TYPE "B"

- Temperature limitations according to the selected seat material. Review the above chart or contact our Technical Department for more information.
- Replaceable and reinforced seat ring available in different materials such as: AISI 316 (1.4401), CA15, Ni Hard, etc



RESILIENT, TYPE "A"

- Standard resilient seat.
- Temperature limitations according to seat material selected. Review the above chart or contact our technical department for more information.
- Replaceable seat retainer ring



DEFLECTION CONE "C"

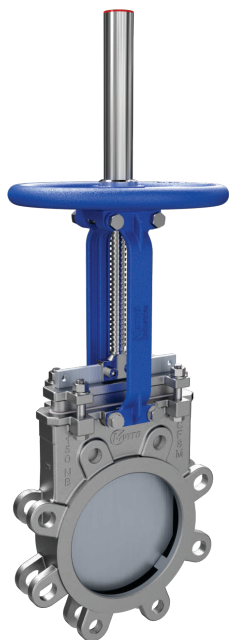
- Deflects the media away from any valve internal exposed parts (gate, seat,...)
- Material: AISI 316 (1.4401), CA15, Ni-Hard, PU, etc.
- Face-to-face dimension increases:
DN 50 to DN 250 X = 9mm
DN 300 to DN 600 X = 12mm
Larger diameters on request

SEAT / SEALS

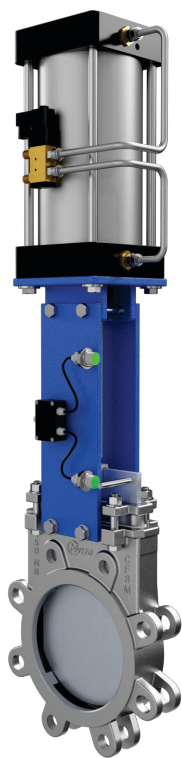
Material	Max.T (°C)	Applications
Metal/Metal	>250	High temp. / Low tightness
EPDM (E)	120	Acids and non mineral oils
Nitrile (N)	120	Resistance to petroleum products
Viton (V)	200	Chemical service /High temp.
Silicone (S)	250	Food service / High temp.
PTFE (T)	250	Corrosion resistance

More details and other materials under request

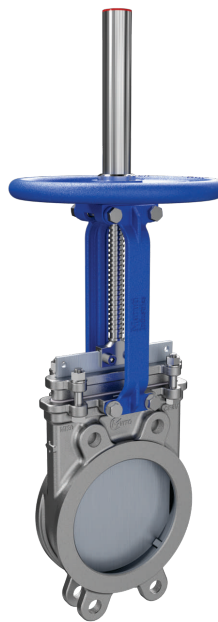
RANGE OF DESIGN



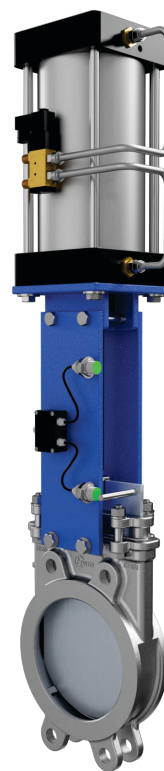
MI-MS



MI-MP



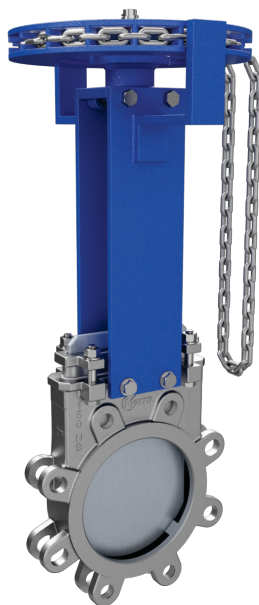
MI-MS2



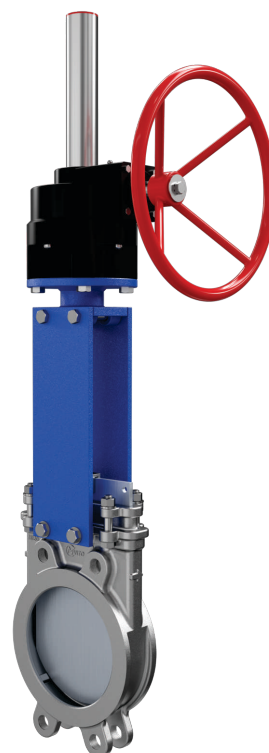
MI-MP2



MI-ME



MI-MC



MI-MG



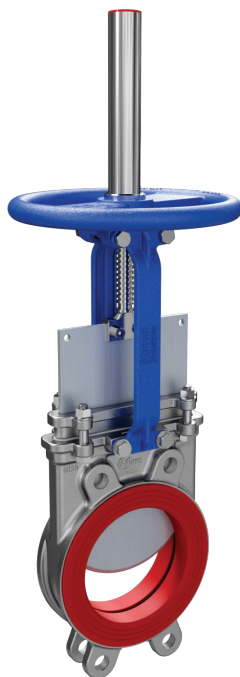
MI-MOR



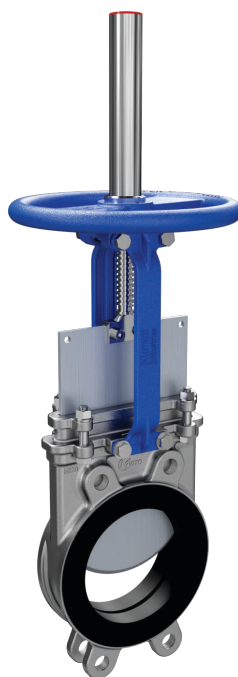
MI-MD



MI-MDP



MI-BDP



MI-BDR



MI-BDM



MI-ML



maruti

VALVES

Quality
Meets
Excellence



AHMEDABAD

OFFICE & FACTORY :- (UNIT - 1)

MARUTI HOUSE 99 TO 102 & 119, Vikas Estate,
Nr. Municipal School, Anil Starch Mill Road,
Bapungar, Ahmedabad-380024 (Gujarat) India.

FACTORY :- (UNIT - 2)

Swastik Industrial Park, Plot No. B-10,
Kothiya Kunha Road, Patiya, Kunha,
Daskroi, Ahmedabad.



RAJKOT

OFFICE & FACTORY :-

Mvito Industriese Pvt. Ltd. (Group of Company)

Serve No. 127, Plot No. 1/2/6, Madhav Industries Park -1,
Chibhda Taravda Road, Balsar, Rajkot-380021

OFFICE :-

Shivam Industrial Area, Plot No. 78,
Gondal Road, B/h. Krishna Park,
Vavdi, Rajkot-3800004



marutivalves@yahoo.com
sales@marutivalves.com



www.marutivalves.com
www.knifeedgegatevalve.in



+91 95125 06161
+91 95125 06262